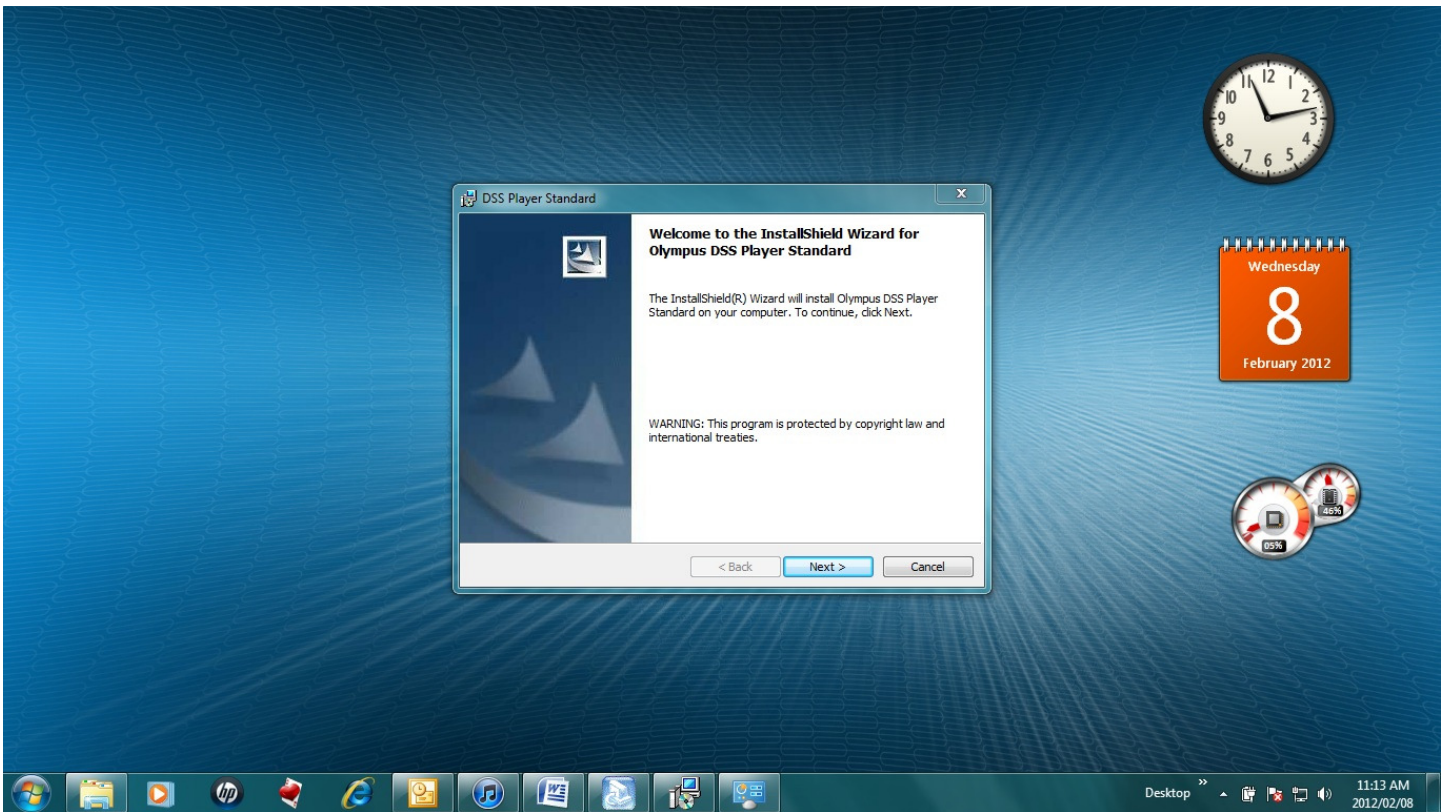
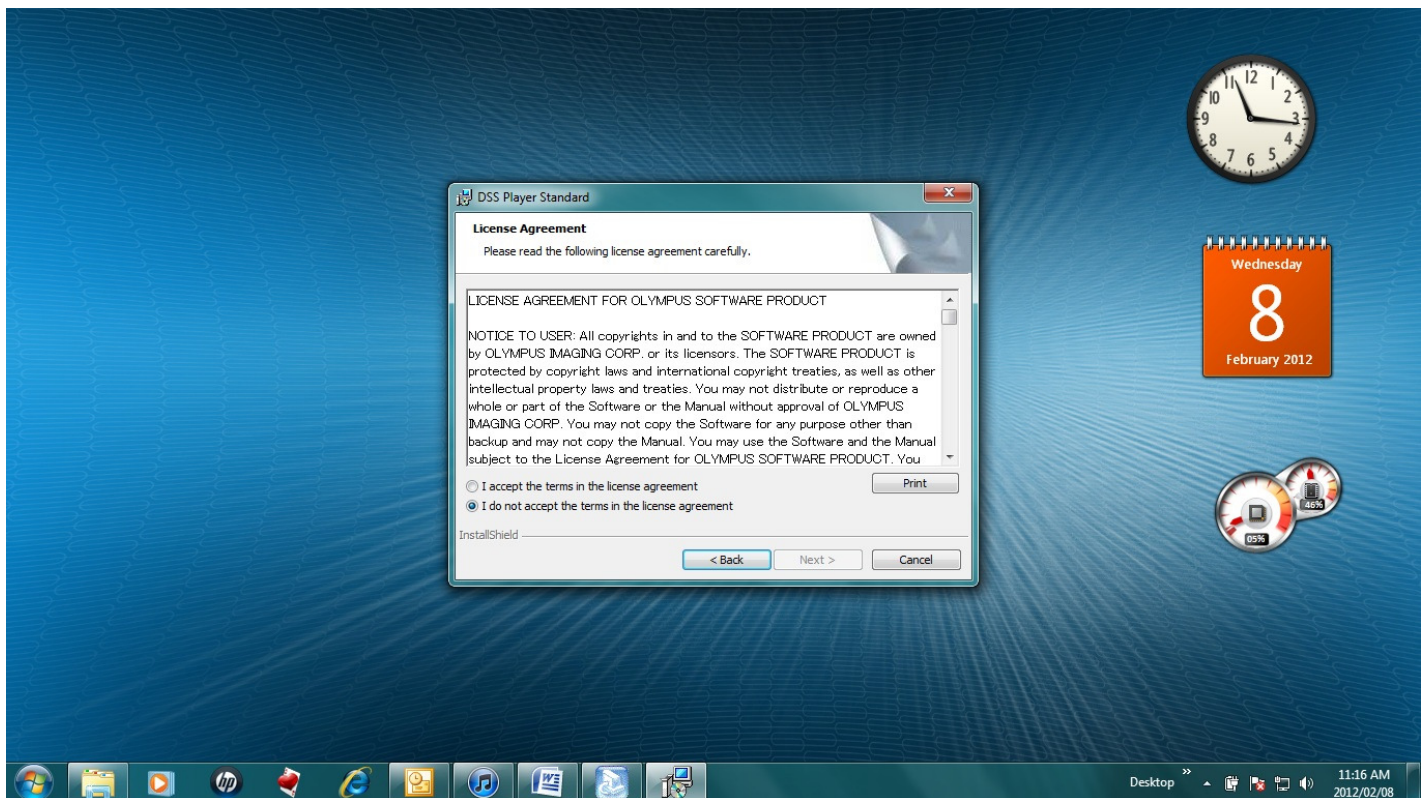


Installation instruction for DSS-Player Standard Release 1

- Insert R1 software CD
- CD should autorun or “Autoplay”
- If “Autoplay” select “Run launcher.exe” else select “DSS-Player Standard installation”
- Click next as per screenshot below



- Select “I accept the terms in the licence agreement” as per screenshot below and
- Click Next



- Enter your licence number in the spaces provided and
- Click Next
- Click Next again and
- Click Install
- You will now notice the installation progress while the files are copied
- Click Finish